

Talk Story ('olelo Kama'ilio)

Promoting Health Equity and Social Justice
in American Indian/Alaska Native Communities

Wendy Nakatsukasa-Ono, MPH
Center for Health Training—Seattle

Why the disproportionate burden of HIV/STDs?



What is health disparity?



Health disparity is a particular type of health difference that is closely linked with social or economic disadvantage. Health disparities adversely affect groups of people who have systematically experienced greater social or economic obstacles to health

What is health equity?

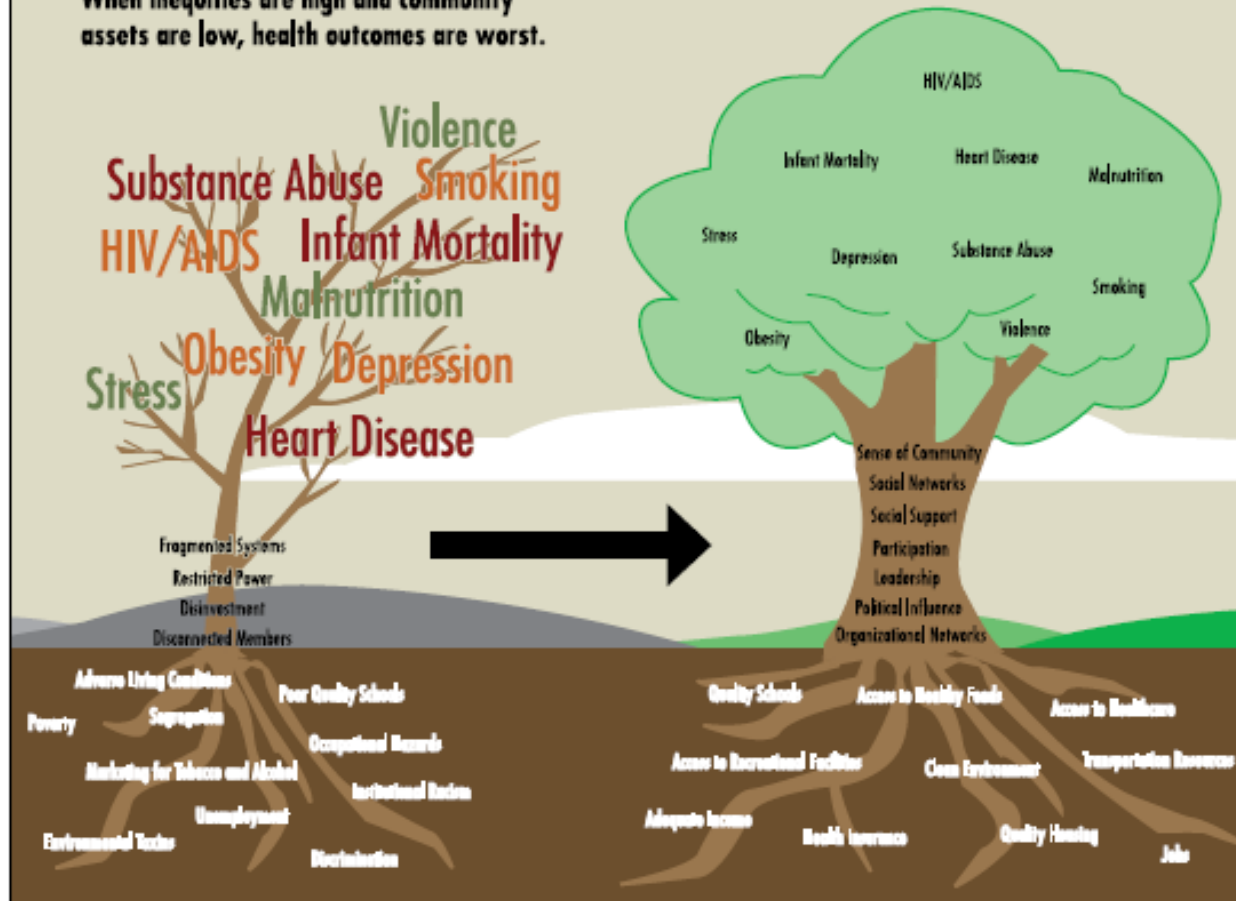


Absence of systematic disparities in health
(or its social determinants)
between more and less advantaged
social groups

Our environments cultivate our communities and our communities nurture our health.

When inequities are high and community assets are low, health outcomes are worst.

When inequities are low and community assets are high, health outcomes are best.



Brennan Ramirez LK, Baker EA, Metzler M. Promoting health equity: a resource to help communities address social determinants of health. Atlanta: U.S. Department of Health and Human Services, Centers for Disease Control and Prevention; 2008.

How do we pursue health equity?



Pursuing health equity
=
Pursuing the elimination
of such health disparities/inequalities

Social determinants of health



It is true that individual-level determinants...
are major drivers. However, it is also clear
that the patterns and distributions
of these infectious diseases...
are further influenced by a dynamic interplay
among the prevalence of the infectious agent,
the effectiveness of...interventions,
and a range of social and structural
environmental factors

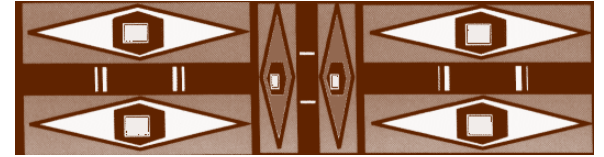


Initiatives to address inequities in SDH

- Small-scale program and policy initiatives
- Traditional public health program and policy initiatives
- Large-scale program and policy initiatives

Brennan Ramirez LK, Baker EA, Metzler M. Promoting health equity: a resource to help communities address social determinants of health. Atlanta: U.S. Department of Health and Human Services, Centers for Disease Control and Prevention; 2008.

Examples from Alaska



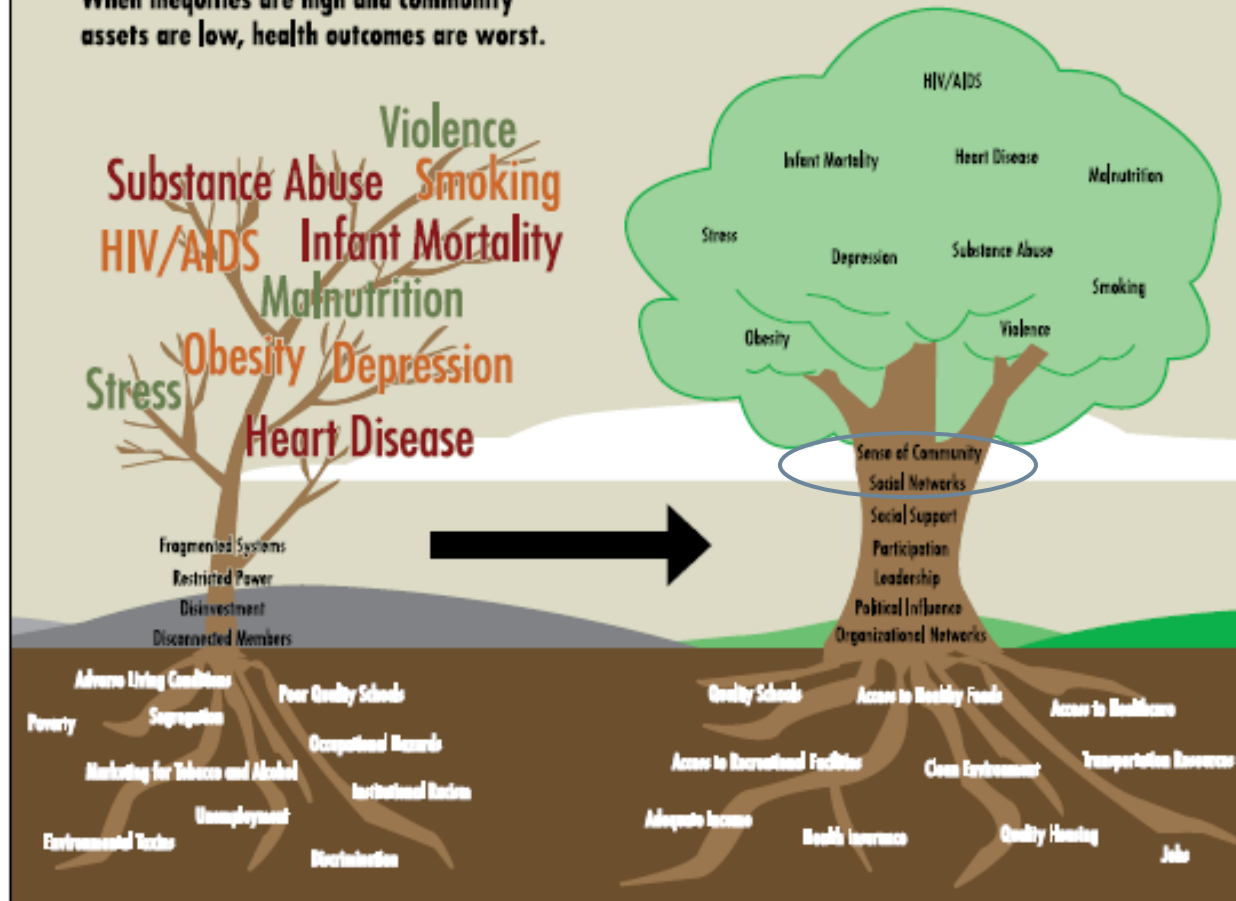
We need to ensure
that our Native ways are being taught
as well as the ways of the western world.

—Patricia Longley Cochran
Inupiat Eskimo

Our environments cultivate our communities and our communities nurture our health.

When inequities are high and community assets are low, health outcomes are worst.

When inequities are low and community assets are high, health outcomes are best.



Brennan Ramirez LK, Baker EA, Metzler M. Promoting health equity: a resource to help communities address social determinants of health. Atlanta: U.S. Department of Health and Human Services, Centers for Disease Control and Prevention; 2008.

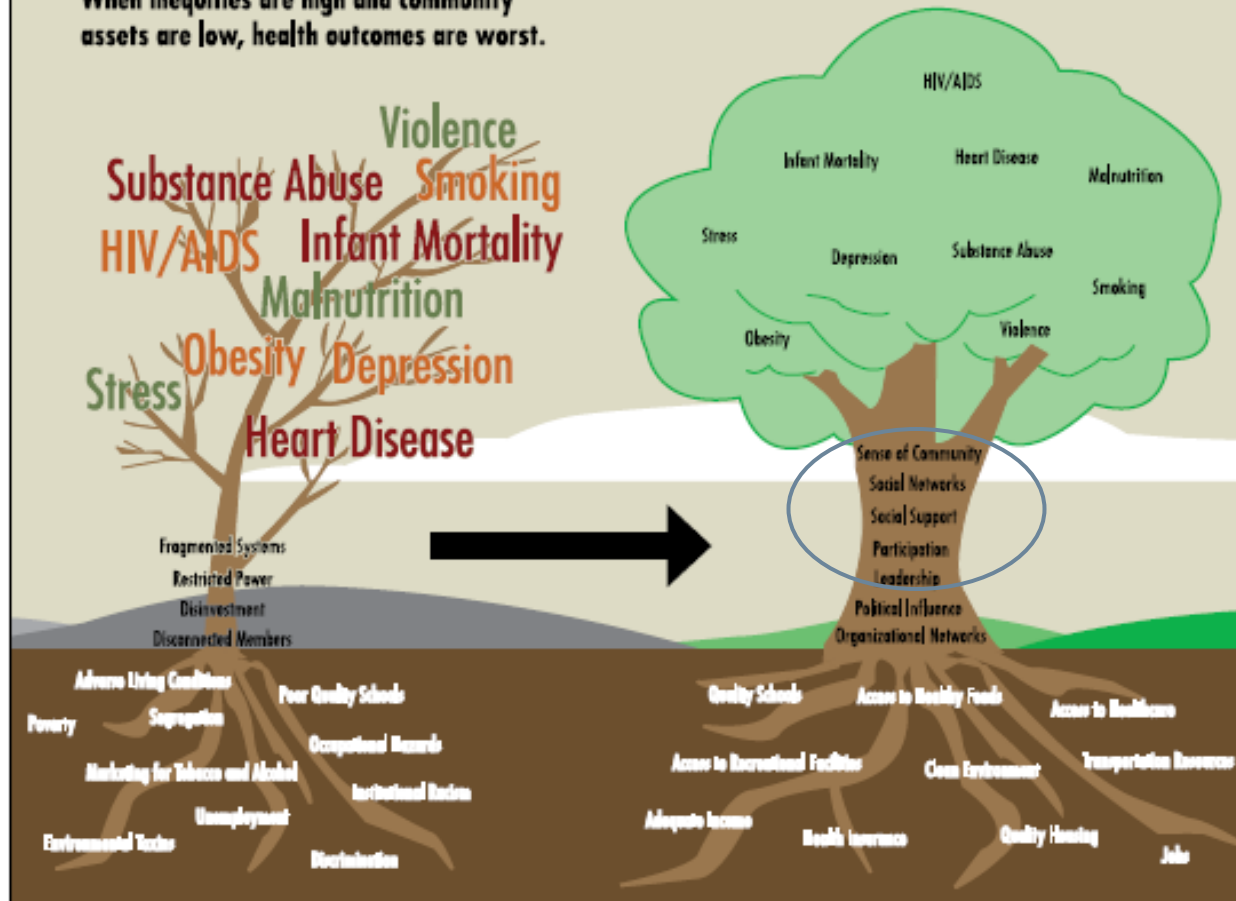
The Walrus Hunt

<http://www.youtube.com/watch?v=J325bv5GJAI>

Our environments cultivate our communities and our communities nurture our health.

When inequities are high and community assets are low, health outcomes are worst.

When inequities are low and community assets are high, health outcomes are best.



Brennan Ramirez LK, Baker EA, Metzler M. Promoting health equity: a resource to help communities address social determinants of health. Atlanta: U.S. Department of Health and Human Services, Centers for Disease Control and Prevention; 2008.

Family Wellness Warriors Initiative

FAMILY WELLNESS WARRIORS INITIATIVE



CALLING OUT THE WARRIOR!

Join Alaska Native people in ending Domestic Violence, Child Sexual Abuse and Child Neglect.

IN THIS GENERATION!

The Family Wellness Warriors Initiative (FWWI) provides intensive education and training, thoroughly grounded in traditional values and using Alaska Native strengths to provide skills and tools for community leaders, adults in the helping profession and natural helpers to affect change in family violence and child maltreatment.

Since 2001, FWWI has trained more than 1500 helpers throughout Alaska and is committed to come alongside communities who desire to help bring the program to their region in a collaboration of efforts. It is time to rise, as Alaska Native men and women, to restore wellness for our families.

For more information on how to be involved, contact FWWI:
(907)729-5440
www.fwwi.org



Breaking the Silence



<http://www.fwwi.org/video4.cfm>

Examples from ANTHC

iknowmine.org

The screenshot shows a Windows Internet Explorer browser window displaying the homepage of iknowmine.org. The browser's address bar shows the URL https://www.iknowmine.org. The website features a large header with the text "iknowmine. Home" and a navigation menu. The main content area is titled "AND the winners are..." and "Thank you to everyone who got tested and entered!". Below this, there is a paragraph of text about the HIV Testing initiative, followed by a section titled "Voluntary HIV testing is a critical first step...". There are three small images in a row. To the right, there is a sidebar with a "Send me condoms!" button, a "Share your story..." link, a "GYT" graphic with statistics, and a "Blog updates" section.

iknowmine. Home

AND the winners are...

Thank you to everyone who got tested and entered!

The HIV Testing initiative was a great success with 144 entries from around the state! We are happy to announce that this year's winner of 25,000 Alaska Airlines miles was Isabel Ayala in Dillingham. The iPod Touch went to Christopher Campbell, a dedicated provider at Southcentral Foundation's Primary Care Clinic. Congratulations to both!

Voluntary HIV testing is a critical first step in taking control and responsibility over one's health. Finding out one's HIV status is the first step to improving your health and the health of your partners, family and community!

Are you an Alaskan provider who would like to have an impact on STD control efforts? If so please take a moment to participate in a survey done by the State of Alaska Epidemiology Section

Send me condoms!
Yes, send me free condoms!

Share your story. Or read someone else's.

GYT 1 IN 2 SEXUALLY ACTIVE YOUNG PEOPLE WILL GET AN STD BY 25 - MOST WON'T KNOW IT

Blog updates
What your peers want you to know about HIV/STDs.

iknowmine.org




The screenshot shows a Windows Internet Explorer browser window displaying the 'Community' page of iknowmine.org. The address bar shows the URL 'https://www.iknowmine.org/Community/'. The browser's Favorites bar includes 'Community', 'Web Slice Gallery', and 'Suggested Sites'. The main content area features a large banner with the text 'iknowmine. Community' and four colored circles. Below the banner are three images: a photo of two people, a red mannequin, and a silhouette of a person on a bicycle. A green callout box contains the text 'Share your story. Or read someone else's.' Below this is a video player showing a woman's face, with a play button overlay. To the right of the video is a green box titled 'Know your status!' containing the text: 'Shawna shares her experience of growing up in a small community in Alaska where everyone knows everybody.' The browser's status bar at the bottom shows 'Done', 'Internet | Protected Mode: On', and '100%' zoom level.

Community - Windows Internet Explorer


https://www.iknowmine.org/Community/

Community

iknowmine. Community



Share your story.
Or read someone else's.



Know your status!

Shawna shares her experience of growing up in a small community in Alaska where everyone knows everybody.

Done Internet | Protected Mode: On 100%



iknowmine.org

Our Story (link at bottom of page)

<https://www.iknowmine.org/>

Community Drum

Interview Questions to be Published on Community Drum - Windows Internet Explorer

http://www.communitydrum.org/html/interview.html

File Edit View Favorites Tools Help

★ Favorites | ★ Suggested Sites | ★ Free Hotmail | RealPlayer | Web Slice Gallery

Interview Questions to be Published on Commun... | Page | Safety | Tools

Submitting Answers to the Interview Questionnaire to be Published on Community Drum

Home | About Us | Events | Alaska HIV/AIDS Agencies | Test Sites | Links | Contact

HIV/AIDS Information
About HIV/AIDS
Living with HIV/AIDS
Nutrition & Eating Well
Take Care of Yourself
Medical Terms
Choosing Resources

Telling Others
Should I
How Do I Tell
Telling Employers
Confidentiality
Your Rights

Choosing a Provider
Choosing a Provider
You and Your Provider

Medications
Basic Information
Beginning Meds
Commitment

Reducing Risks
Reducing Your Risks
Safer Sex
Buying Condoms
Putting on Condoms

Community Sharing
Submitting Stories
Poems
Interviews
- Aleut
- Inupiaq
- Yupik
Forum

These interviews are from Alaska Natives living with HIV or AIDS, family members, or care providers who have been affected by someone living with this disease.

Individuals from the Aleut, Alutiiq, Athabaskan, Cupik, Haida, Inupiat, Siberian Yupik, Tlingit, Tsimshian, Yup'ik and other American Indians who live in Alaska, have all been affected by this disease.

Most of the responses to the questionnaire are anonymous. We appreciate people's willingness to share personal thoughts and stories about how HIV/AIDS have affected their lives. We honor their bravery. We respect their honesty.

If you wish to contribute a poem, your own story or your thoughts, you can submit them to [Story Coordinator](#). If you need help trying to figure out what to say, you can answer one of the questionnaires below and submit it instead.

When you open the questionnaire, you will need to save it to your computer by going to File, Save As, then you will be able to fill it out and send it back to the above email address. You could also mail it to:

Alaska Native Tribal Health Consortium
Community Drum
4000 Ambassador Drive, MS C-DCHS
Anchorage, Alaska 99508

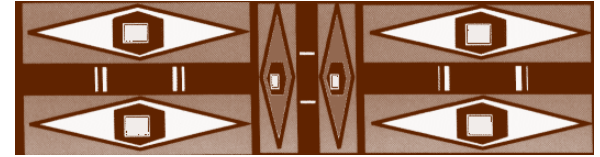
ATTN: LREVELS

Questionnaires

- [HIV Positive \(self\)](#)
- [Family member of HIV Positive](#)
- [Provider of HIV Positive](#)

Home | Events | HIV/AIDS Agencies | Test Sites | Links | Stories | Contact

Internet | Protected Mode: On | 75%



We cannot let pride get in the way
of facing any predator (disease)
that has the potential of our ethnic extinction....
Let us continue with our heads held high
and preserve our people....
One of our values is taking care of the tribe.

—Selina A. Moose
Inupiaq



Other examples?



To prevent disease, we increasingly ask people to do things that they have not done previously, to stop doing things they have been doing for years, and to do more of some things and less of other things...

It is unreasonable to expect that people will change their behavior easily when so many forces in the social, cultural, and physical environment conspire against such change.

A social environmental approach to health and health interventions. In: Smedley BD, Syme SL, eds. *Promoting Health: Intervention Strategies from Social and Behavioral Research*. Washington, D.C.: National Academy Press; 2000.



Center for Health Training

206/447-9538 *tel*

206/447-9539 *fax*

www.centerforhealthtraining.com



Wendy Nakatsukasa-Ono, MPH

Program Director

wono@jba-cht.com